



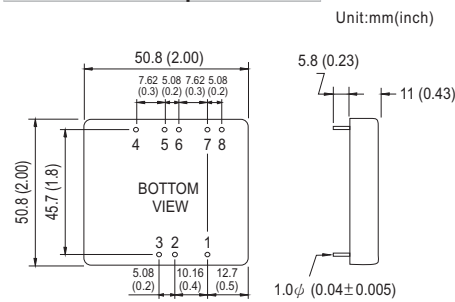
- Features :
 - 2:1 wide input range
 - High efficiency up to 92%
 - 1500VDC I/O isolation
 - Built-in EMI filter
 - Built-in remote ON / OFF control
 - Built-in remote sense
 - Trimming output \pm 0%
 - Protections: Short circuit / Overload / Over voltage
 - Cooling by free air convection
 - Six-sided shield metal case
 - 100% burn-in test
 - Low cost / High reliability
 - Output 3.3V/9V available
 - Approvals: FCC / EAC / CE / UKCA
 - 2 years warranty



SPECIFICATION

ORDER NO.	SKA40A-05	SKA40B-05	SKA40C-05	SKA40A-12	SKA40B-12	SKA40C-12	SKA40A-15	SKA40B-15	SKA40C-15		
OUTPUT	DC VOLTAGE	5V			12V			15V			
	CURRENT RANGE	0.7 ~ 7A			0.3 ~ 3.33A			0.26 ~ 2.67A			
	RATED POWER	35W			40W			40W			
	RIPPLE & NOISE (max.) Note.2	60mVp-p			80mVp-p			100mVp-p			
	LINE REGULATION Note.3	\pm 0.5%									
	LOAD REGULATION Note.4	\pm 0.5%									
	VOLTAGE ACCURACY	\pm 2.0%									
	SWITCHING FREQUENCY	200KHz min.									
	EXTERNAL CAPACITANCE LOAD (max.)	1000uF									
EXTERNAL TRIM Adj. RANGE(Typ.)	\pm 10%										
INPUT	VOLTAGE RANGE	A: 9 ~ 18VDC B: 18 ~ 36VDC C: 36 ~ 75VDC									
	EFFICIENCY (Typ.)	91%	92%	91%	90%	90%	88.5%	90%	90.5%	90%	
	DC CURRENT	Full load	A: 3850mA	B: 1900mA	C: 1000mA						
	No load	A: 150mA	B: 100mA	C: 65mA							
	FILTER	Pi network									
REMOTE CONTROL	Power ON : R.C ~ -Vin > 2.5VDC or open circuit ; Power OFF : R.C ~ -Vin < 0.5VDC or short										
PROTECTION	Fuse recommended										
PROTECTION (Note. 5)	OVER CURRENT	110% ~ 180% rated output power									
	Protection type :	Hiccup mode, recovers automatically after fault condition is removed									
	SHORT CIRCUIT	All output equipped with short circuit									
Protection type :	Hiccup mode, recovers automatically after fault condition is removed										
OVER VOLTAGE	5Vo : 7V ~ 8.95V ; 12Vo : 15V ~ 19.2V ; 15Vo : 18V ~ 23.3V						Protection type : Clamp by TVS diode				
ENVIRONMENT	WORKING TEMP.	-40 ~ +80°C (Refer to "Derating Curve")									
	WORKING HUMIDITY	20% ~ 90% RH non-condensing									
	STORAGE TEMP., HUMIDITY	-55 ~ +105°C, 10 ~ 95% RH									
	TEMP. COEFFICIENT	\pm 0.03% / °C (0 ~ 50°C)									
VIBRATION	10 ~ 500Hz, 2G 10min./1cycle, period for 60min. each along X, Y, Z axes										
SAFETY & EMC	SAFETY STANDARDS	EAC TP TC 020/2011 (EAC TP TC 004 for 48Vin type only) approved									
	WITHSTAND VOLTAGE	I/P-O/P: 1.5KVDC									
	ISOLATION RESISTANCE	I/P-O/P: 100M Ohms / 500VDC / 25°C / 70% RH									
	EMC EMISSION	Compliance to BS EN/EN55032 Class A, FCC part 15 Class A, EAC TP TC 020									
EMC IMMUNITY	Compliance to BS EN/EN61000-4-2,3,4,5,6,8, light industry level, criteria A, EAC TP TC 020										
OTHERS	DIMENSION	50.8*50.8*11.0 mm or 2**2**0.43" inch (L*W*H)									
	WEIGHT	60g									

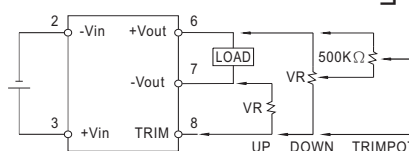
Mechanical Specification



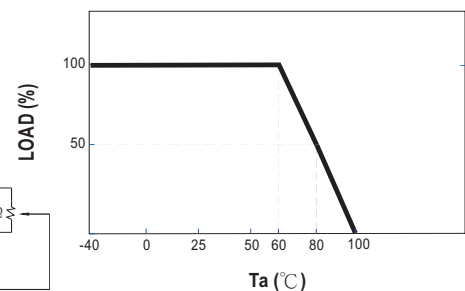
Pin Configuration

Pin No.	Output	Pin No.	Output
1	R.C	5	+R.S
2	-Vin	6	+Vout
3	+Vin	7	-Vout
4	-R.S	8	TRIM

External Output Trimming



Derating Curve



NOTE

- All parameters are specified at normal input, rated load, 25°C 70% RH ambient.
 - Ripple & noise are measured at 20MHz by using a 12" twisted pair terminated with a 0.1uF & 47uF capacitor.
 - Line regulation is measured from low line to high line at rated load.
 - Load regulation is measured from 10% to 100% rated load.
 - Please prevent the converter from operating in overload or short circuit condition for more than 30 seconds.
- ※ Product Liability Disclaimer : For detailed information, please refer to <https://www.meanwell.com/serviceDisclaimer.aspx>

Mouser Electronics

Authorized Distributor

Click to View Pricing, Inventory, Delivery & Lifecycle Information:

MEAN WELL:

[SKA40A-05](#) [SKA40A-12](#) [SKA40A-15](#) [SKA40B-05](#) [SKA40B-12](#) [SKA40B-15](#) [SKA40C-05](#) [SKA40C-12](#) [SKA40C-15](#)